



The Church of the Transfiguration is one of the wooden churches located on Kizhi, an island on Lake Onega, north east of Saint Petersburg. The church is made entirely from wood but does not use a single nail, and is 37 meters high with 22 onion-shaped domes, giving it a very distinctive and fairytale-like appearance. It is believed that the basic foundation for the church was completed in the 16th century, but this was destroyed in a fire from a lightning strike, and the church was rebuilt in 1714. The wooden churches of Kizhi, including this Church of the Transfiguration, were registered as a UNESCO World Heritage Site in 1990.

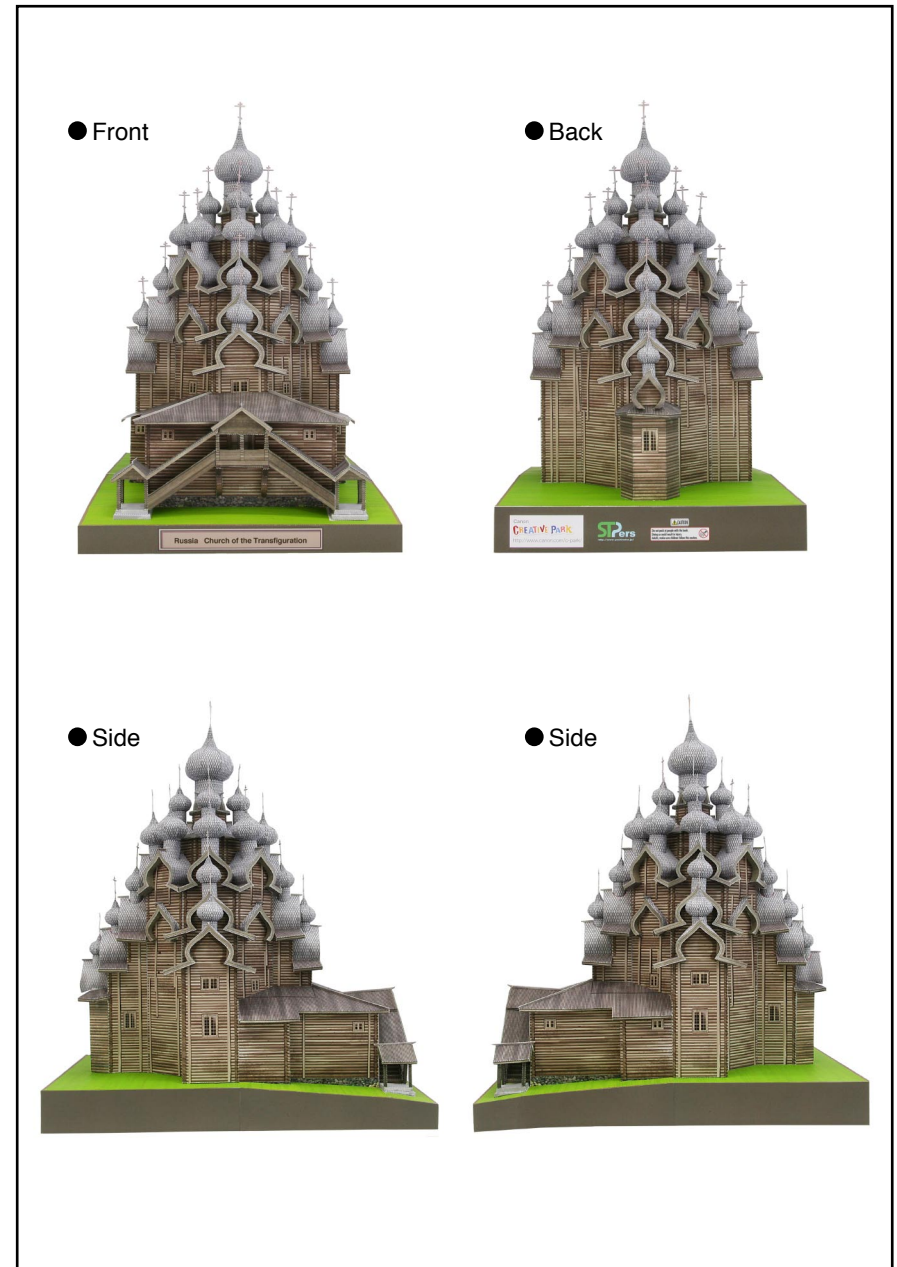
**This model was designed for Papercraft and may differ from the original in some respects.*

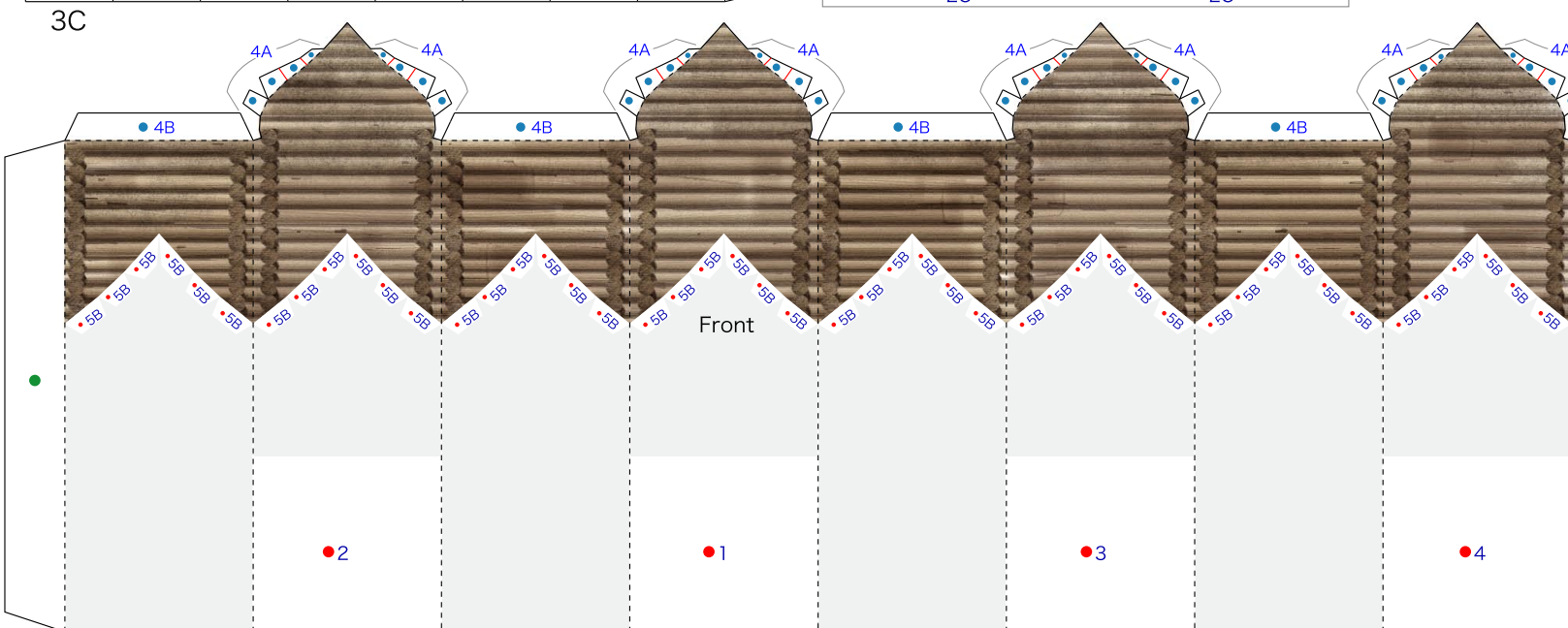
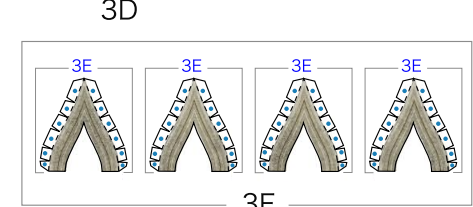
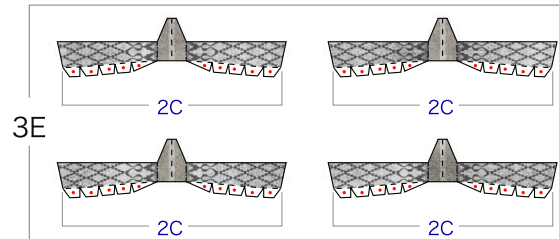
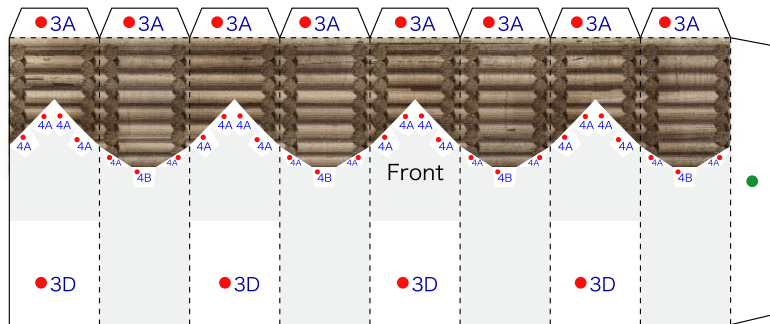
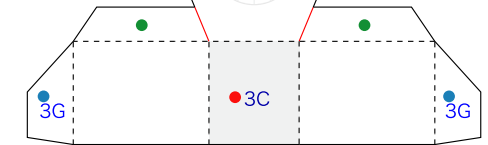
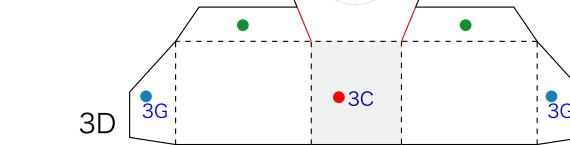
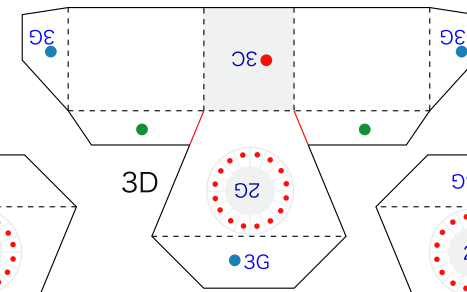
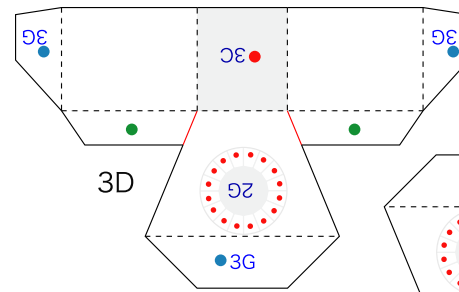
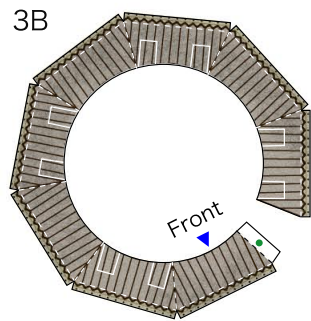
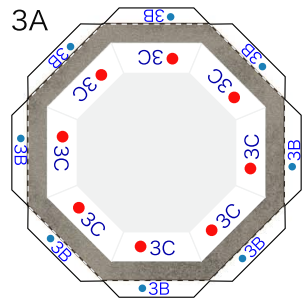
■ **Parts sheet (Pattern) : Twenty Eight A4 sheets**

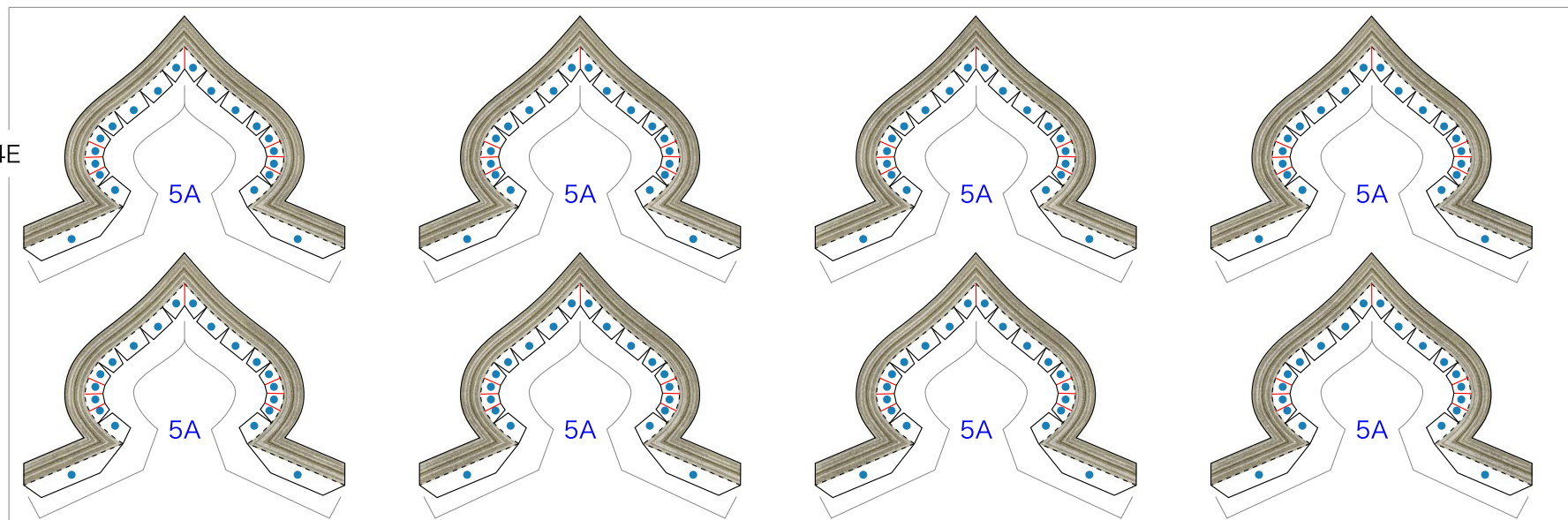
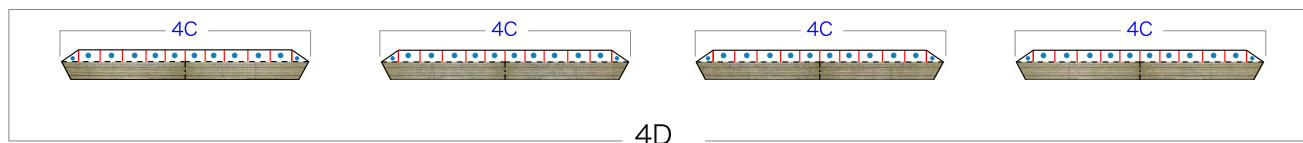
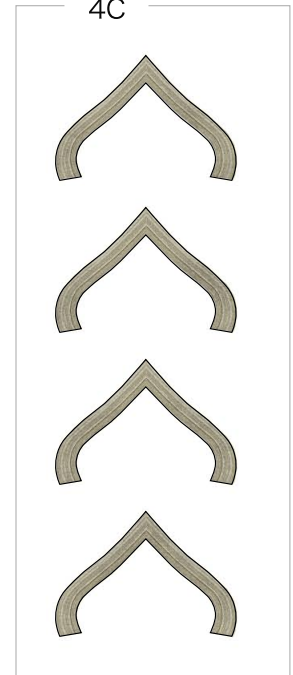
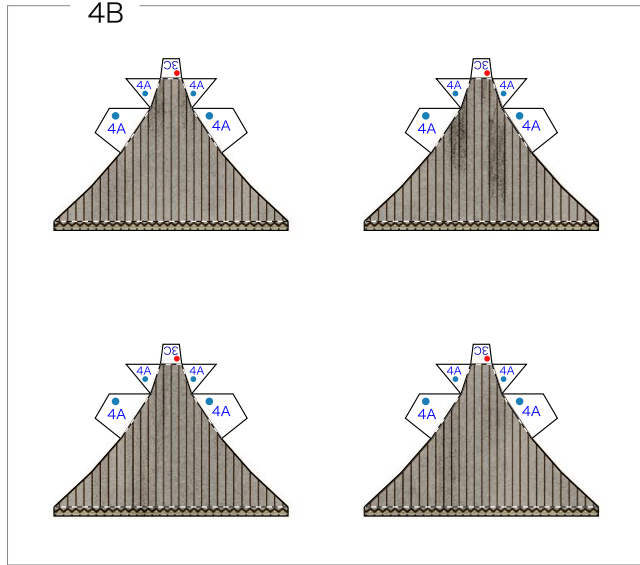
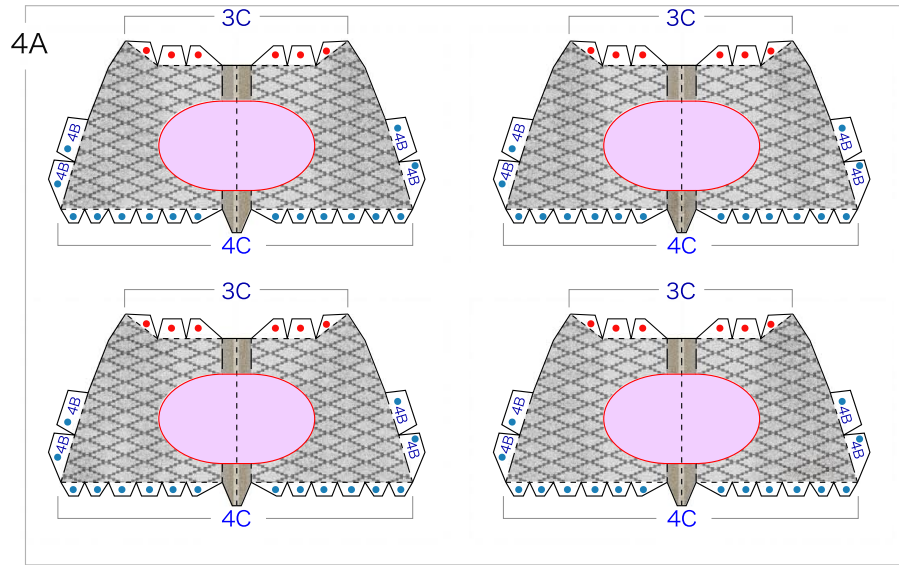
■ **No. of Parts: 224 parts**

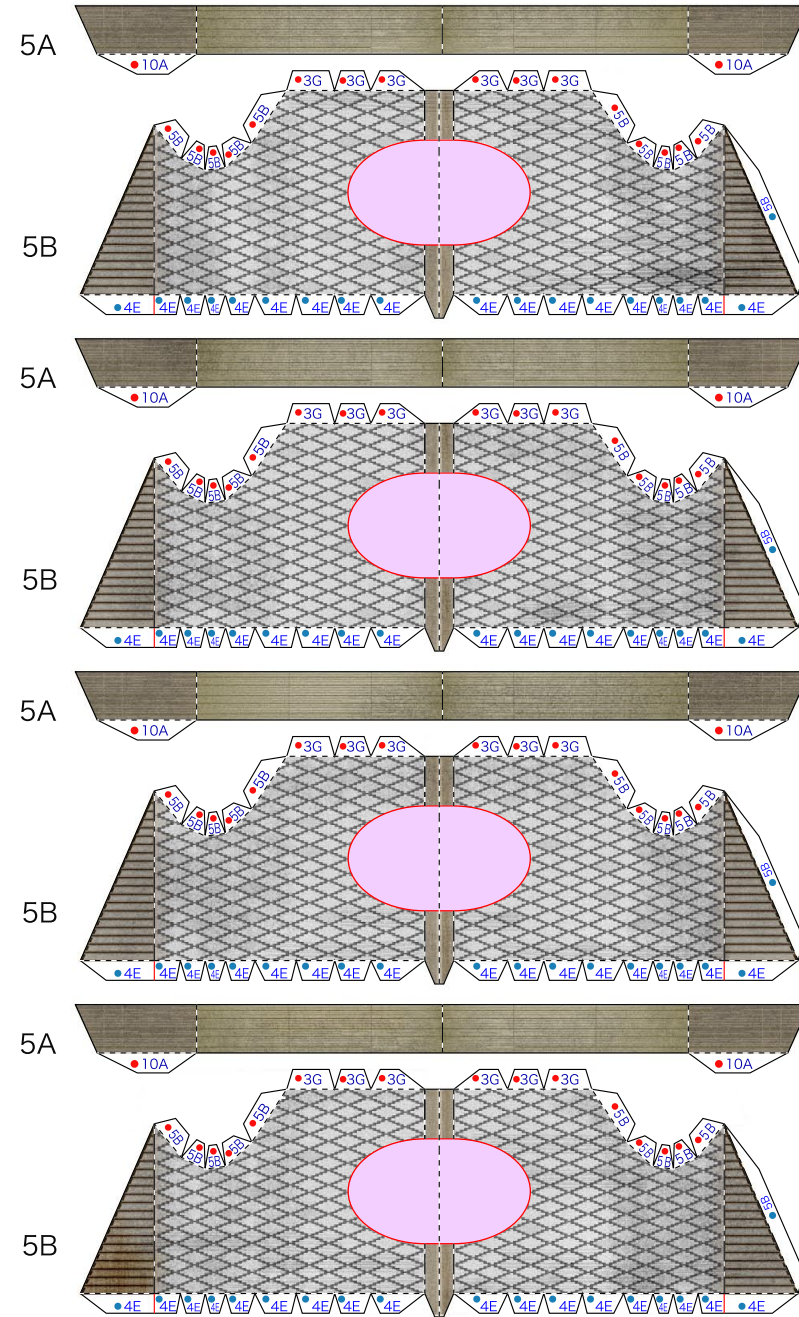
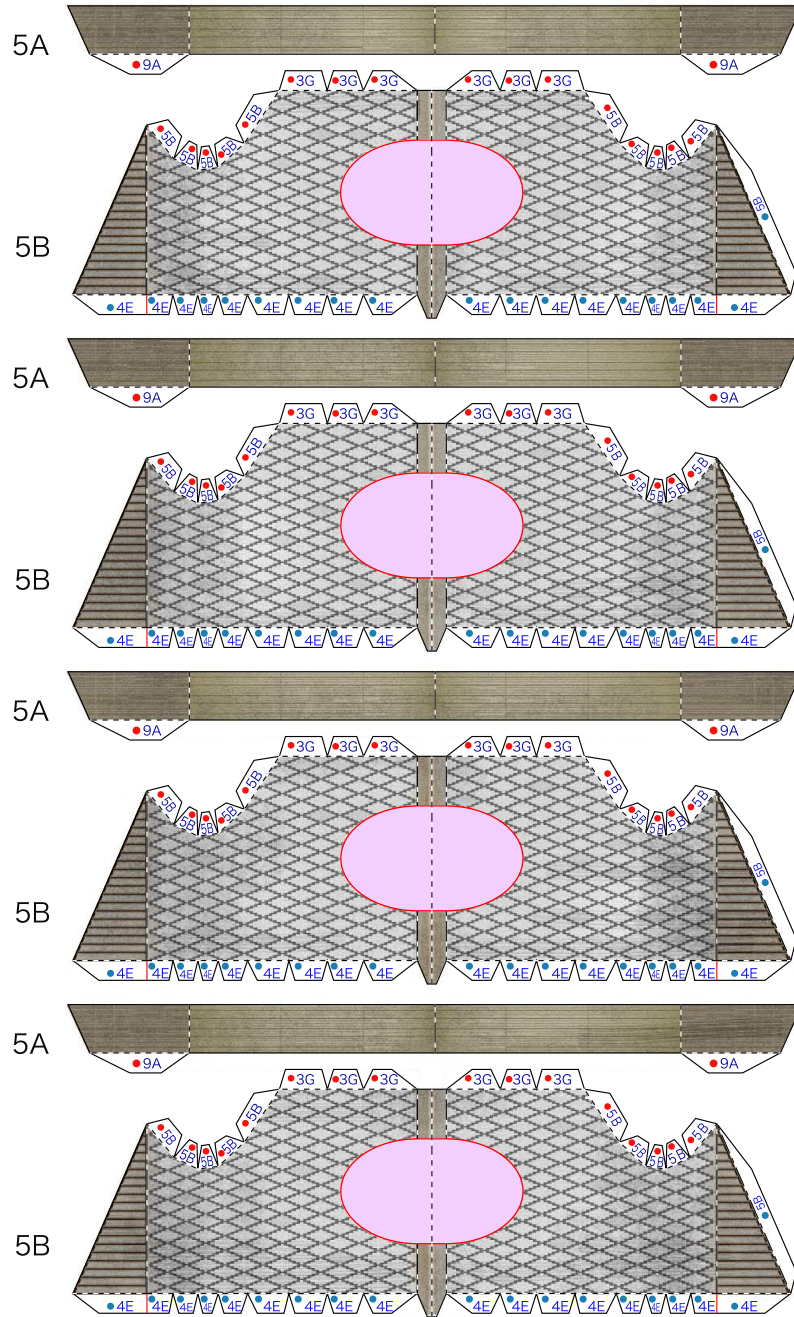
*Build the model by carefully reading the Assembly Instructions, in the parts sheet page order.

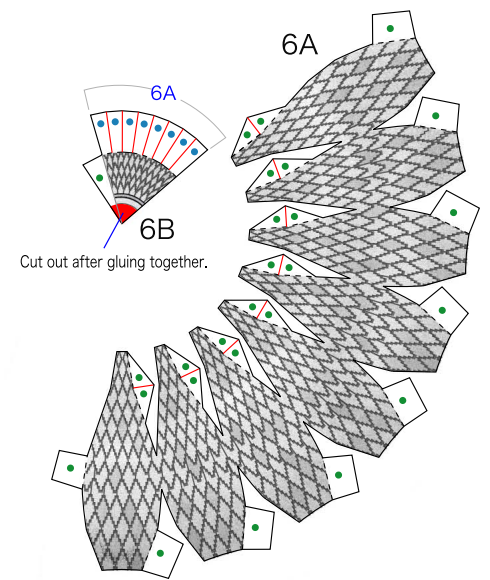
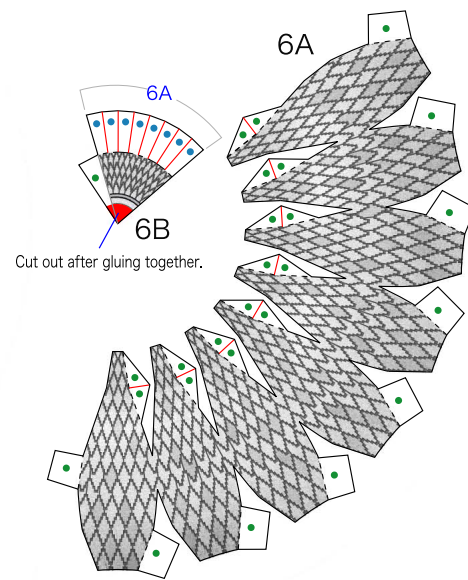
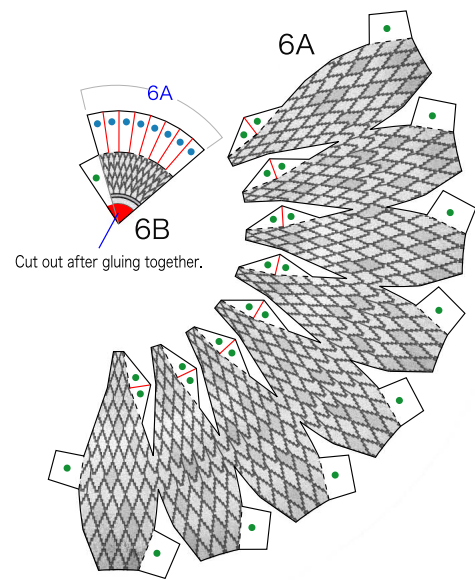
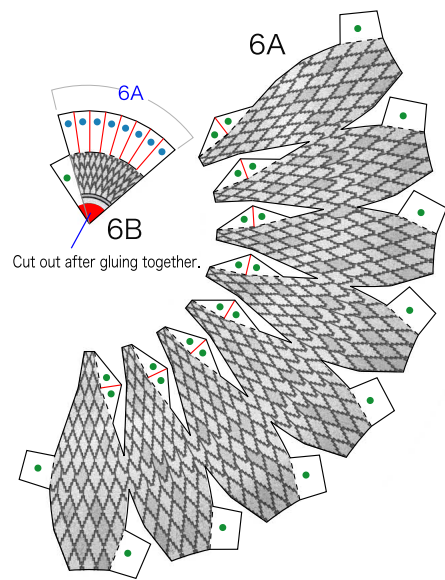
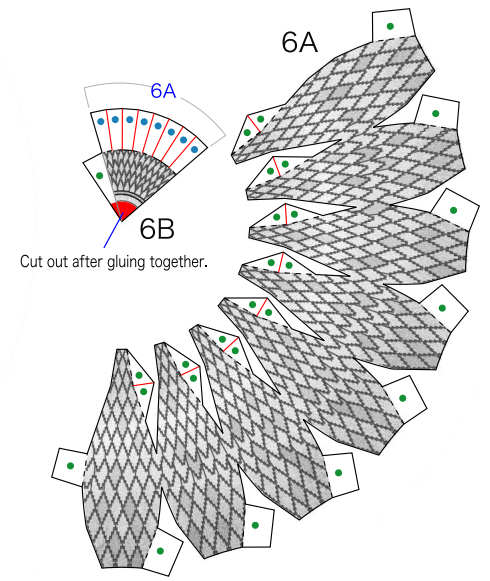
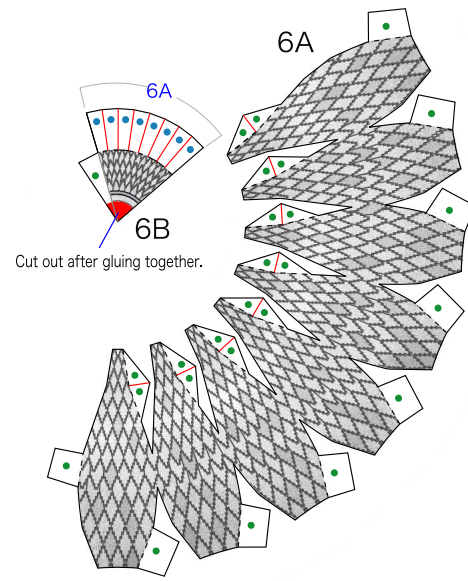
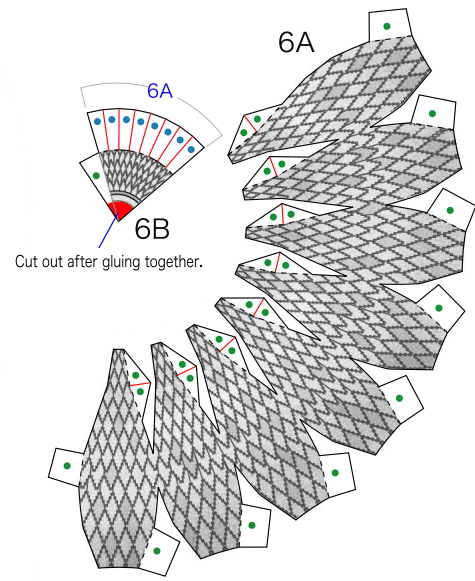
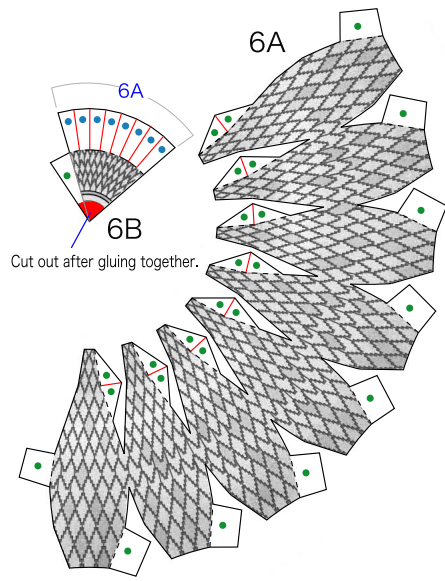
*Assembly will be easier if you write the part's number on the back of each part.

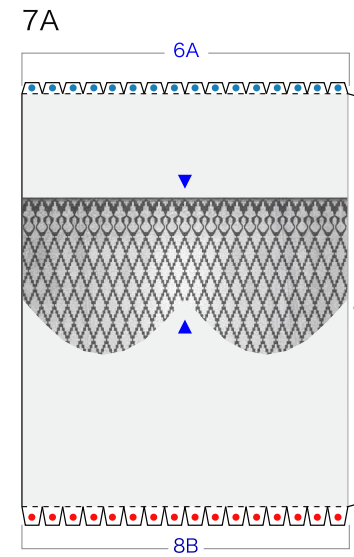
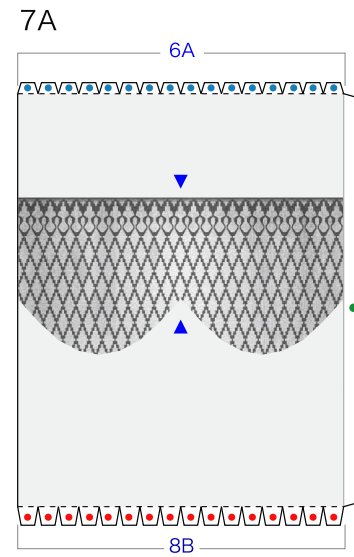
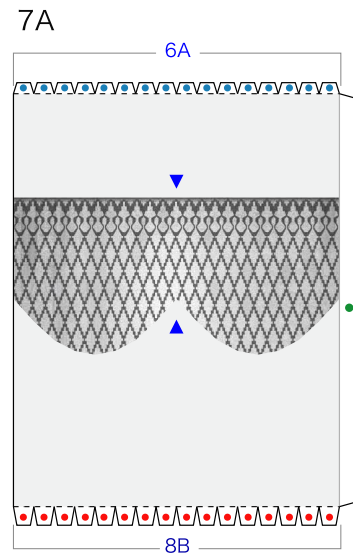
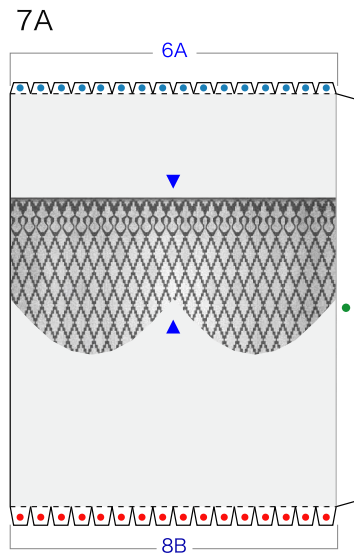
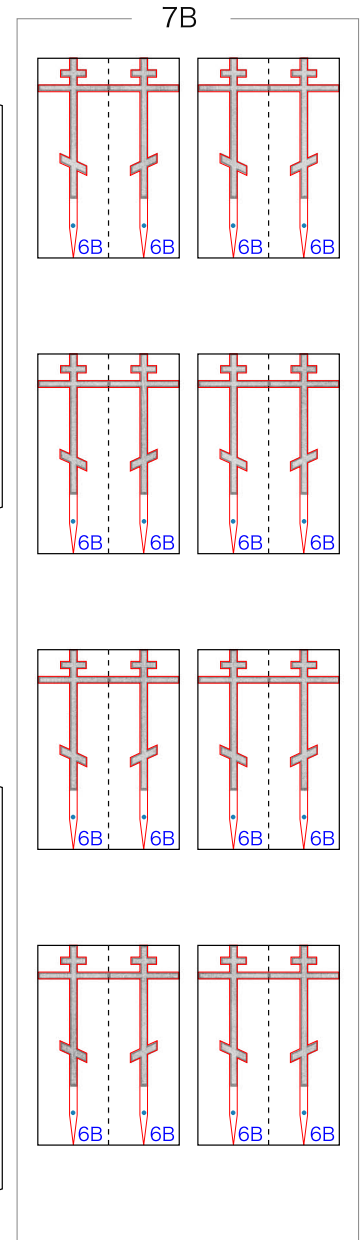
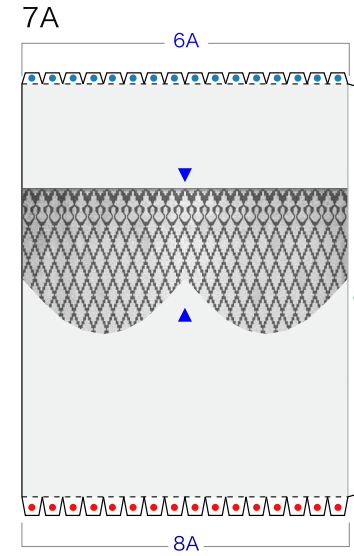
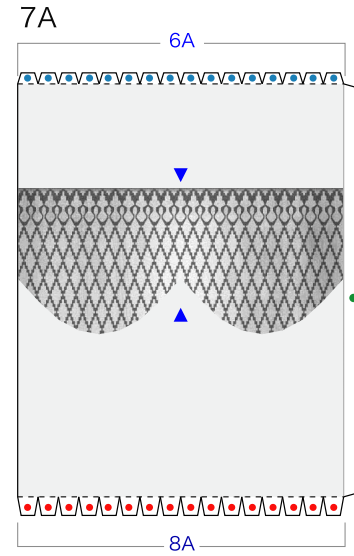
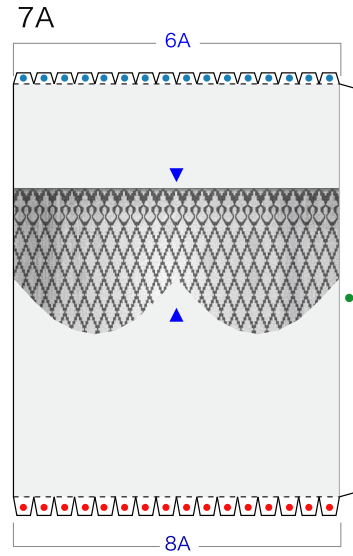
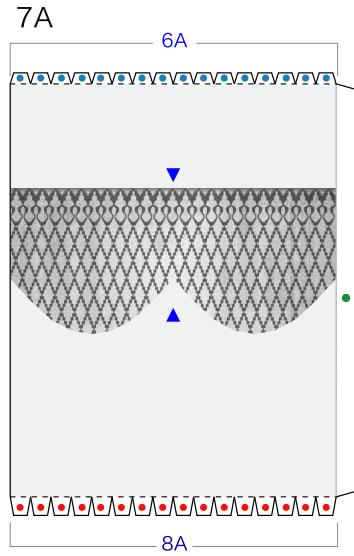


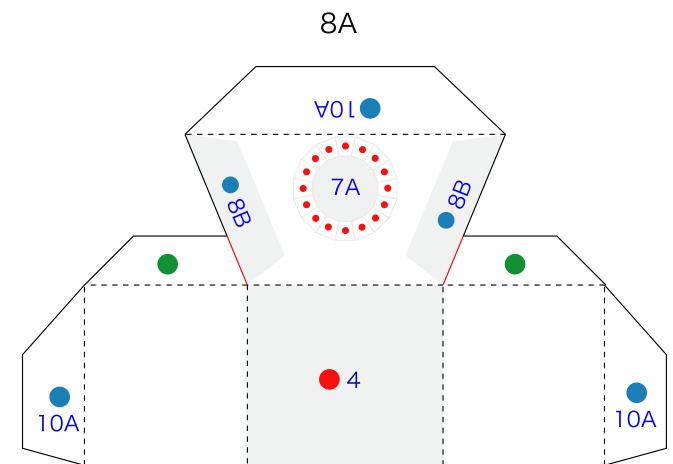
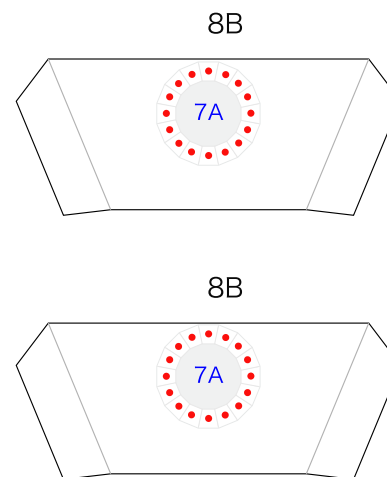
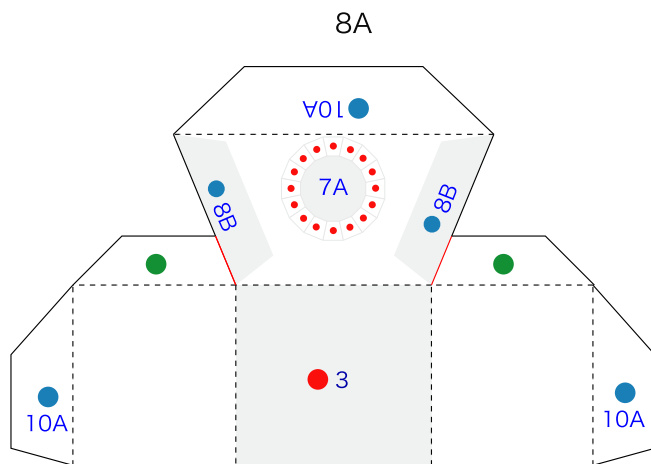
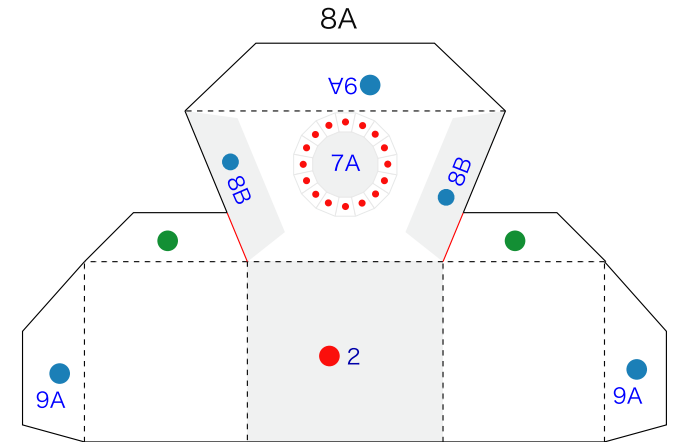
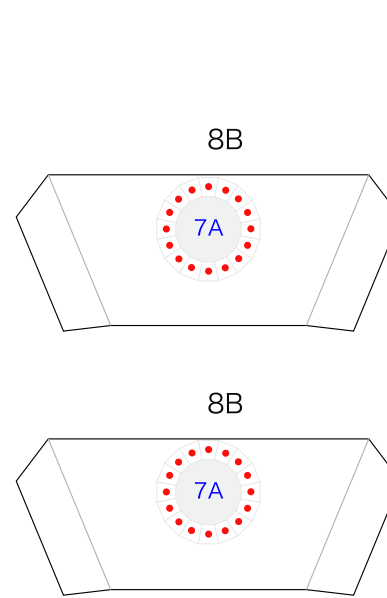
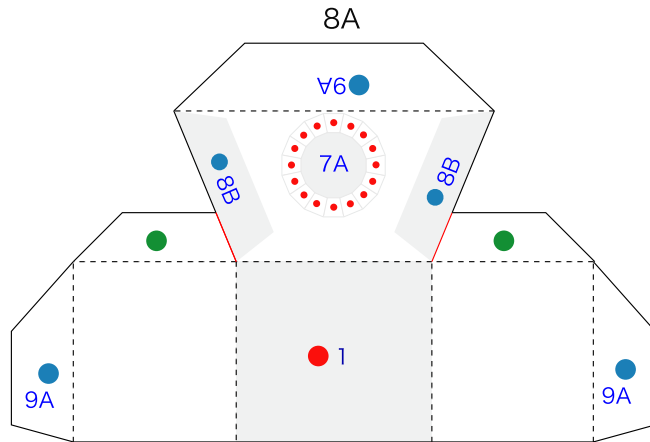




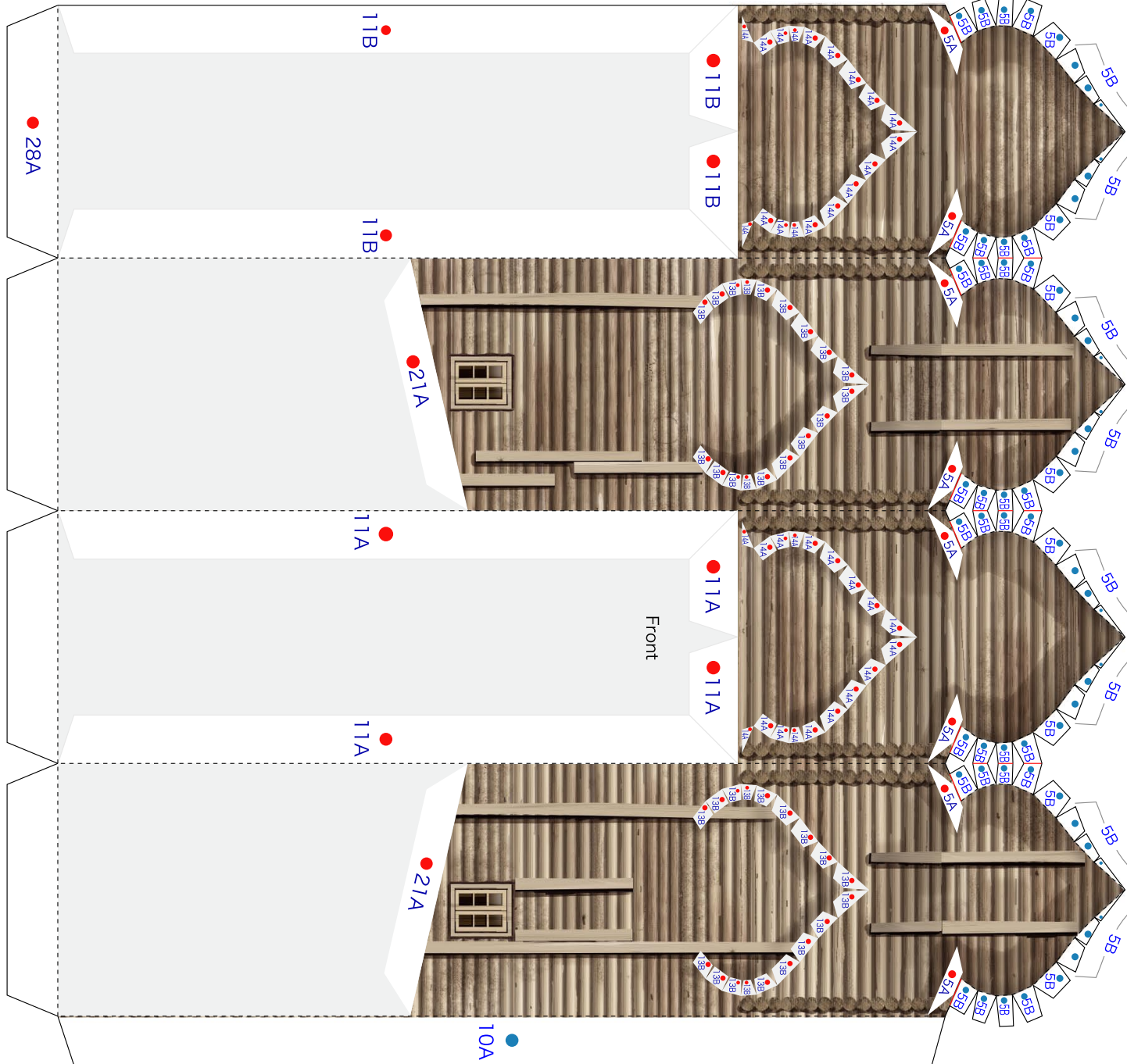




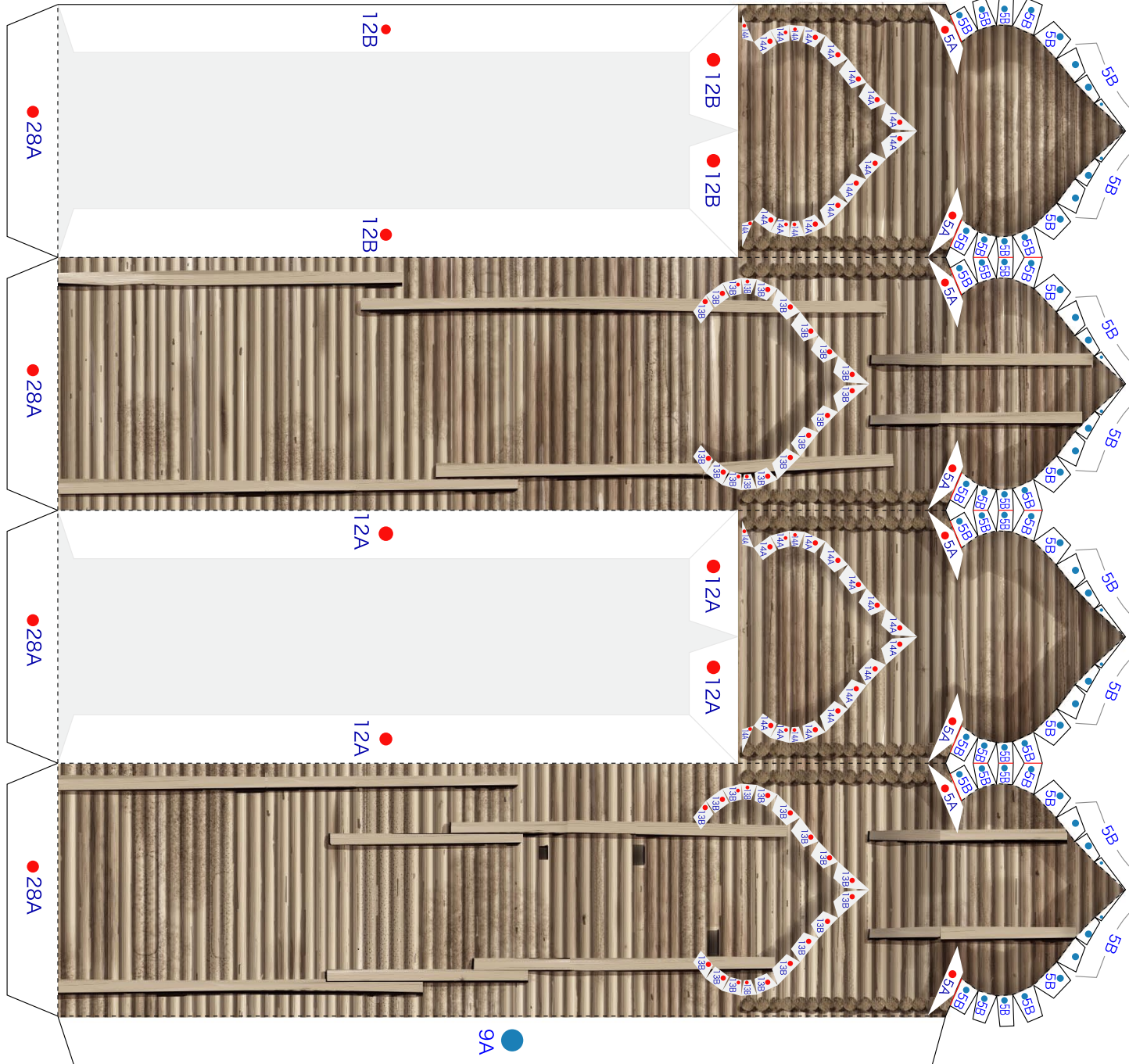


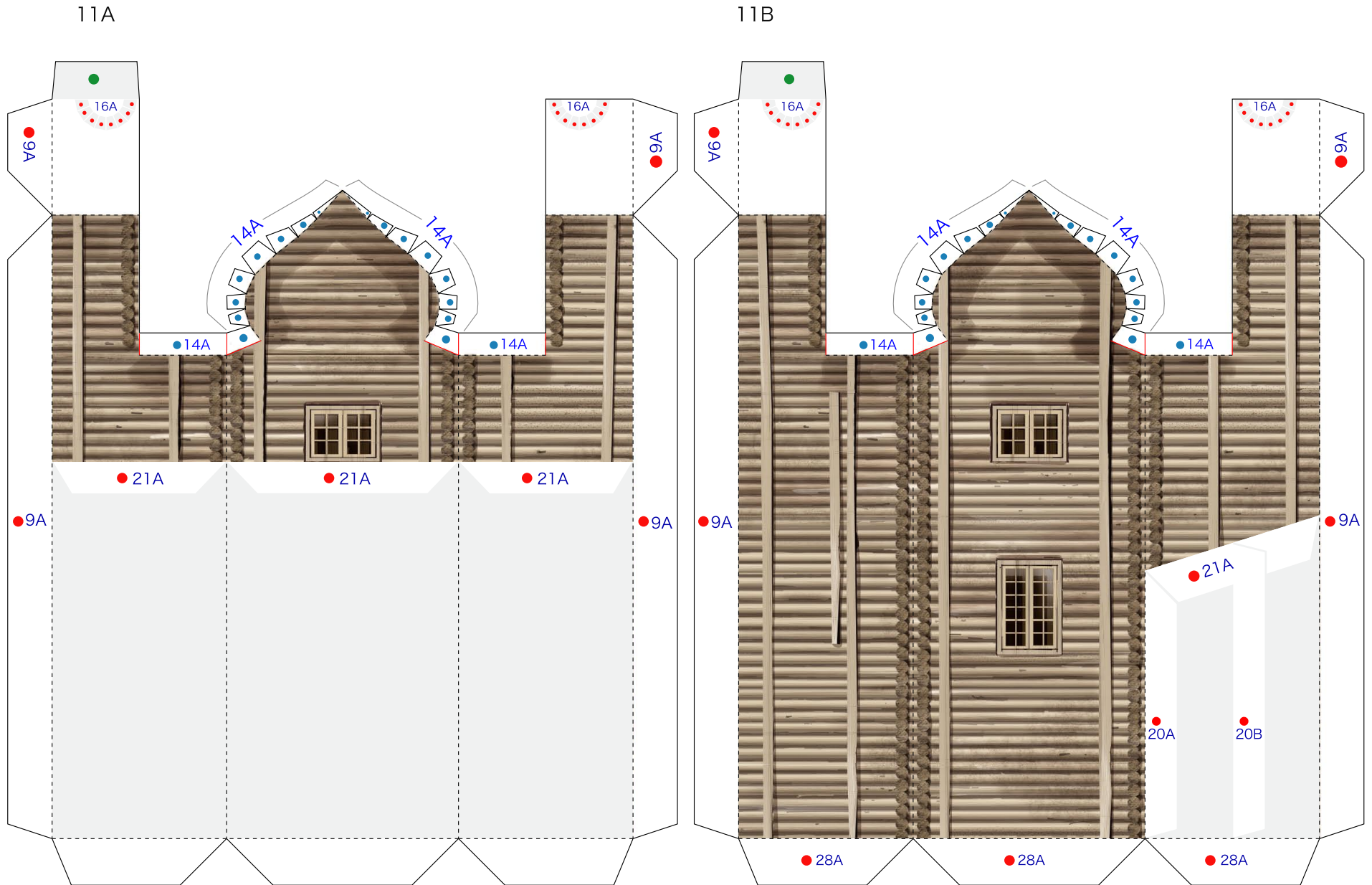


9A

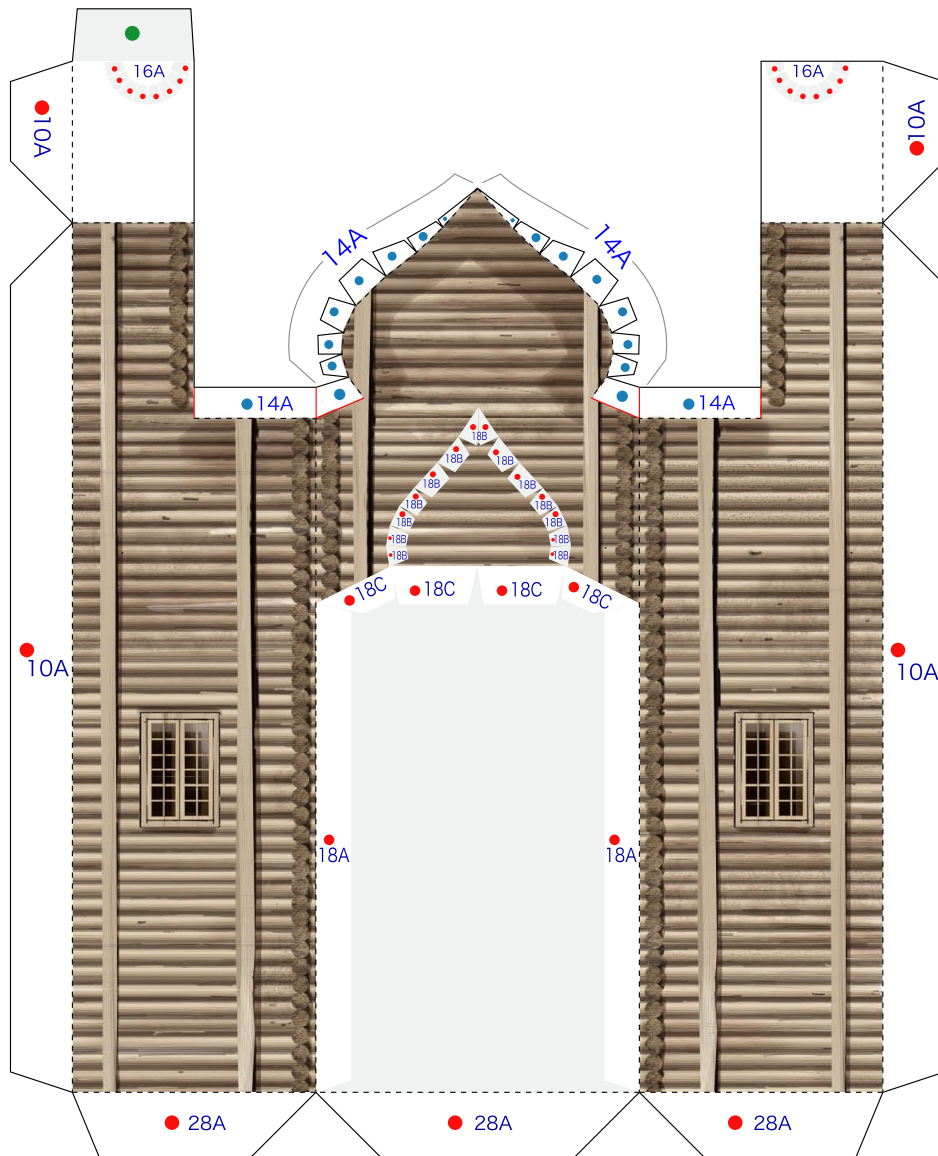


10A





12A



12B

